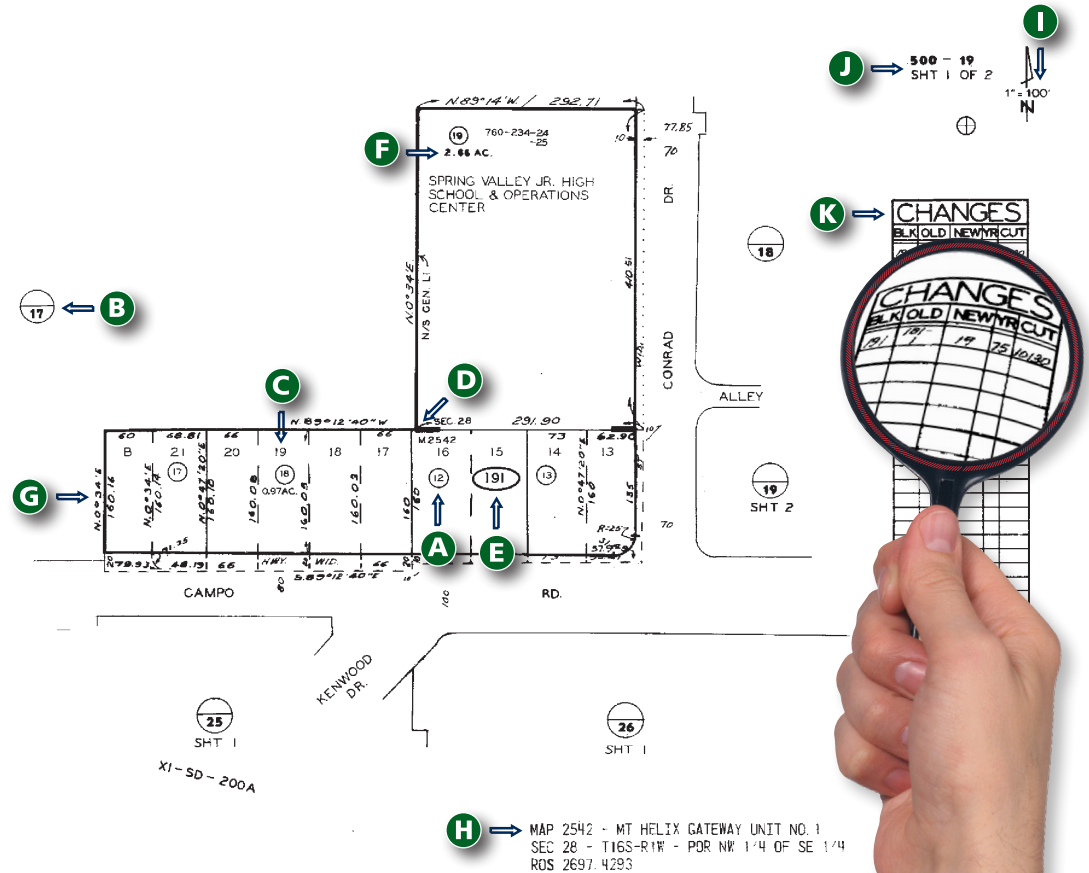


GUIDE TO READING AN ASSESSOR'S PLAT MAP

- A Parcel Number**
Always in a small circle.
(occasionally an oval).
Attached housing will have 2 additional numbers (unit #) at the end of the parcel number.
- B Book & Page Circle**
Indicates what map page (# below the line) adjoins our map and in some cases which Assessor's Book (# above the line).
- C Lot Number**
Never circled; shows the subdivision lot number of the property.
- D "Picture Corner"**
Shows the exterior corners of subdivision map boundaries as shown on the plat.
- E Page Number**
Of the Assessor's Book, Page & Picture Corner 1#. This is the full, 3 digit number (coinciding with column one in the changes box); always in an oval.

- F Acreage Figures**
A decimal number with AC following. Not always accurate. Use only for estimate.
- G Distances & Bearings**
Data on borders of the map. This data is from recorded deeds or surveys.
- H Lower Right**
Brief legal description of properties included on this page.
- I North Arrow**
Will not always be pointing "up."
SCALE: Is useful if map has been printed to proper size.
- J Assessor's Book Number**
Followed by first two digits of the Page Number, located in the upper right corner next to arrow.
- K Changes Box**
Provides the history of the map page.



CUT: Refers to the Assessor's file for document number, re: the change
BLK: Full, three-digit page number area of map.
YR: Assessed tax year the change took place.
OLD: The old (now changed) parcel number.
NEW: The new (changed) parcel number.